

*"Most middle schools are designed to resemble a village or a warehouse and seek to enclose the activities taking place inside. This school, in contrast, embraces openness, transparency, and its connection to the landscape in a very sophisticated way."*

—JUROR COMMENT



## PRAIRIE SCHOOL

### HORIZON MIDDLE SCHOOL

**Location:**  
Moorhead, Minnesota

**Client:**  
Moorhead Area Public Schools

**Architect:**  
Rozeboom Miller Architects  
[www.rmarchitects.com](http://www.rmarchitects.com)

**Principal-in-charge:**  
Ted Rozeboom, AIA

**Project lead designer:**  
Victor Pechaty, AIA

**Landscape architect:**  
oslund.and.assoc.  
[www.oaala.com](http://www.oaala.com)

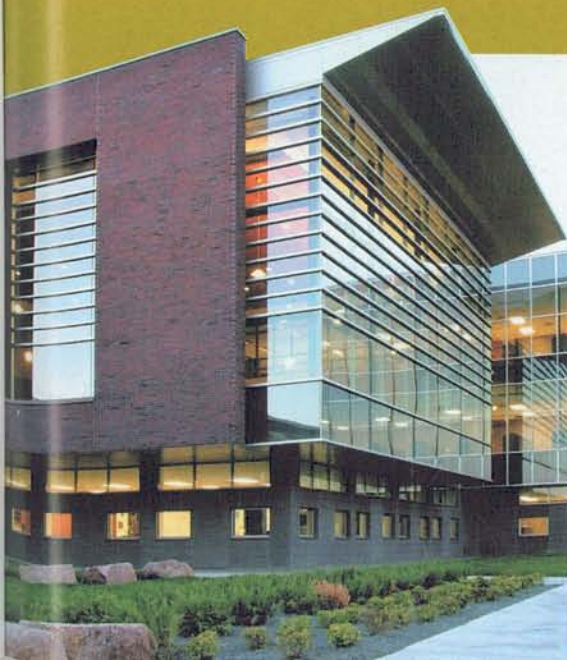
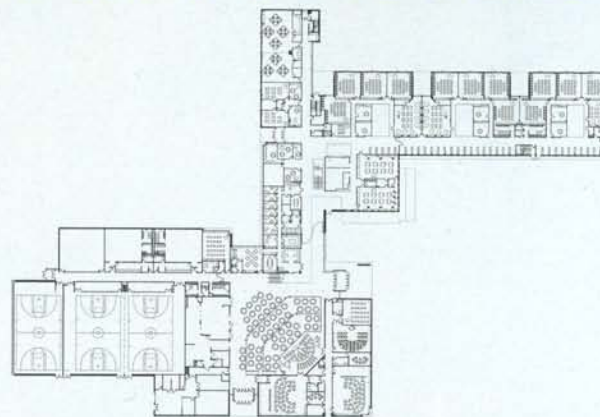
**Construction manager:**  
Kraus-Anderson Construction  
Company

**Size:**  
240,000 square feet

**Cost:**  
\$24.2 million

**Completion date:**  
August 2004

**Photographer:**  
Don F. Wong



Skyscrapers, elite cultural buildings, and glassy seaside homes are the rock stars of the architecture world. So how is it that a middle school in the flattest part of the country is generating so much buzz? For starters, it's like no other middle school you've ever seen. A refined composition of anchoring brick and cantilevered glass boxes, the aptly named Horizon Middle School in Moorhead, Minnesota, is best viewed from a distance, where its intuitive relationship to the fertile plain becomes clear. Rozeboom Miller Architects lifted the glass pieces off the ground to give the building a sense of lightness and to create long views of the landscape for teachers and students. A Z-shaped building plan, meanwhile, affords views from one part of the building into another.

The award-winning design, with its modern (glass-and-aluminum curtain wall) and agrarian (the gymnasium's corrugated-metal siding) notes, has also sparked growth in the surrounding area. A new neighborhood of some 1,200 homes, for example, is being developed on adjacent land. Horizon Middle School has given the City of Moorhead a running start into the 21st century.

—Christopher Hudson

Horizon Middle School was profiled in the November/December 2005 issue of Architecture Minnesota.